

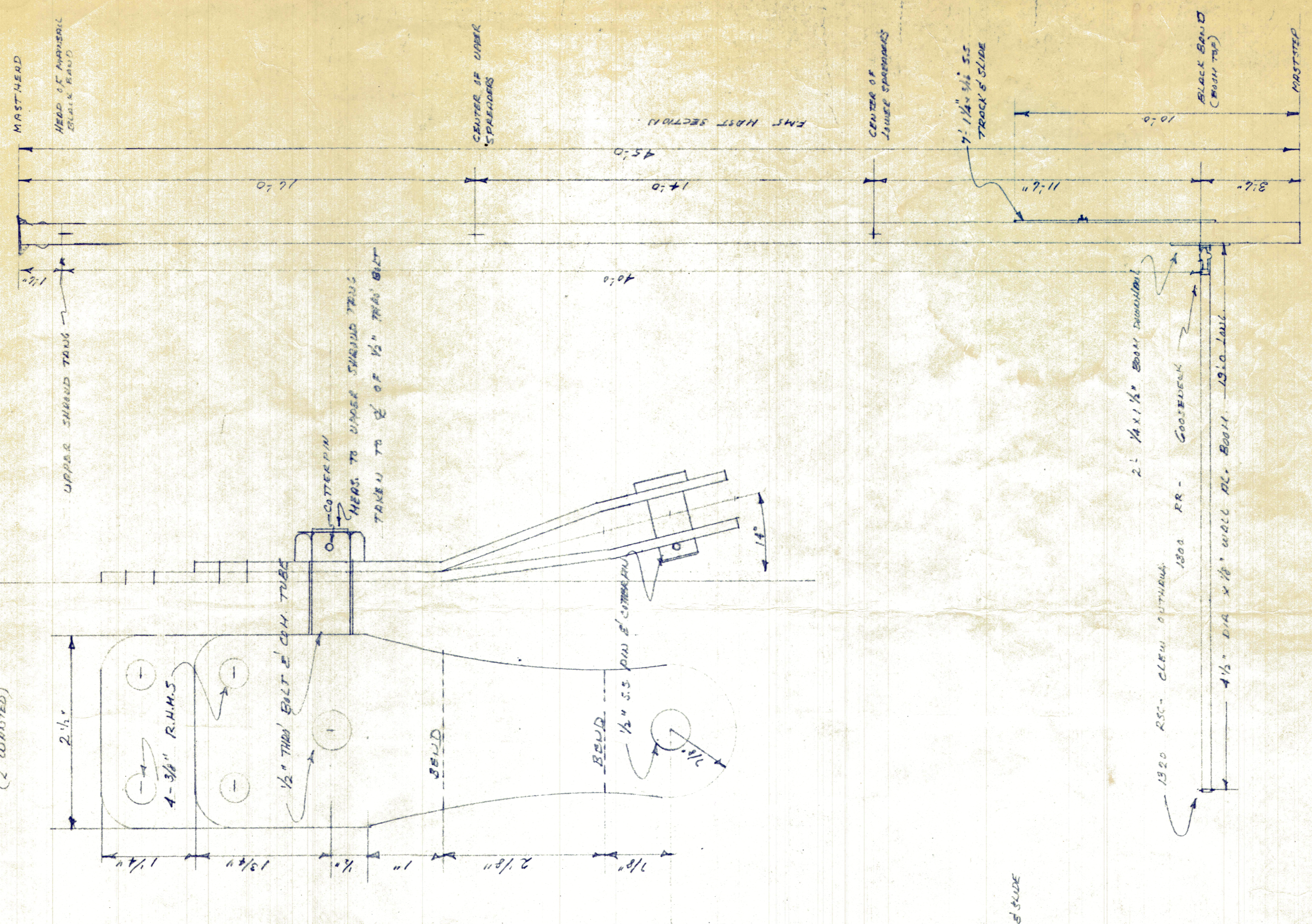
MISC. DETAILS CUTTER TRADE WINDS

34' CUTTER - TRADE WINDS - DESIGNED 10/72

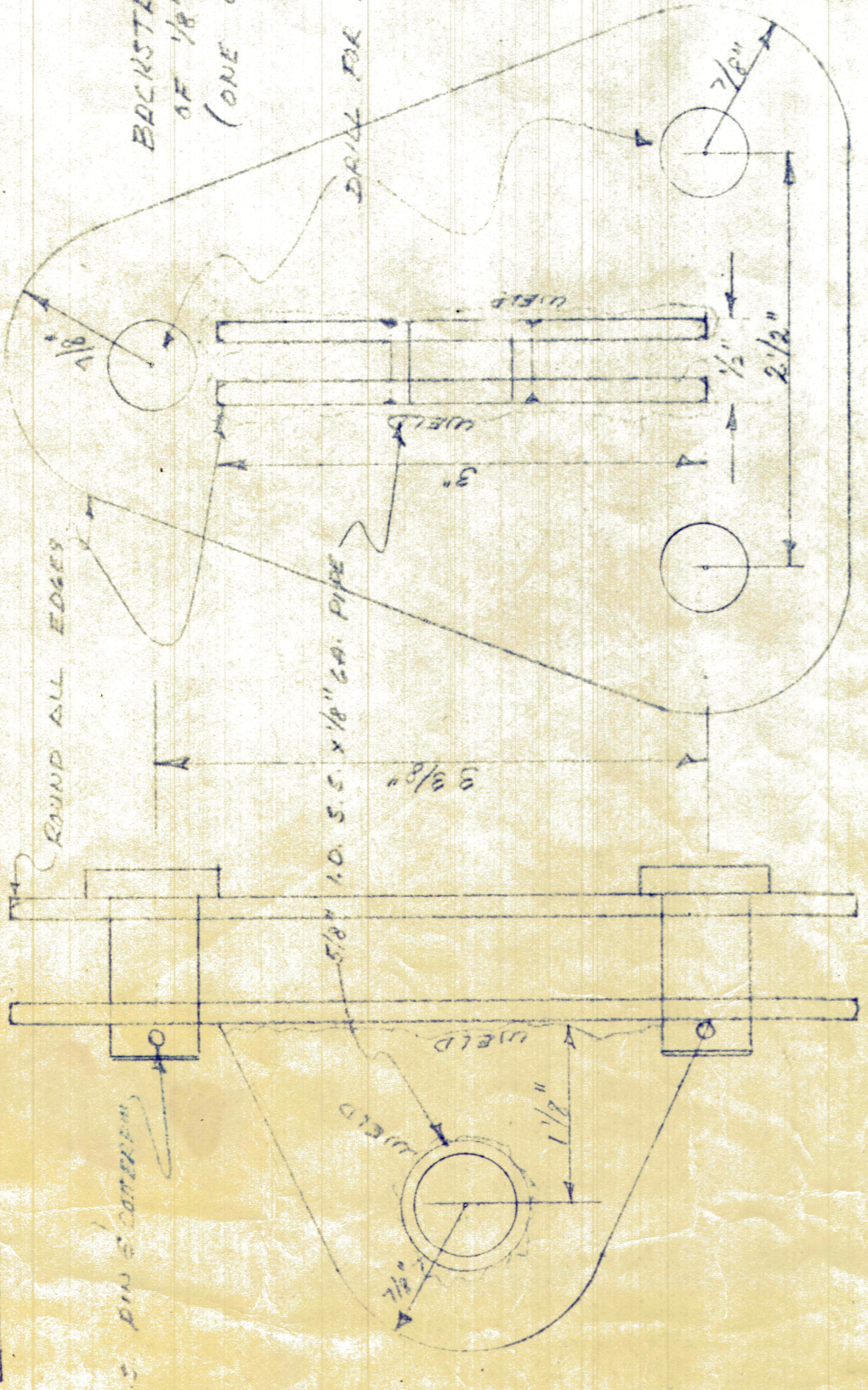
SHEET # 1	-	SPAL PLAN
SHEET # 2	-	LINES PLAN
SHEET # 3	-	TABLE OF OFFICES
SHEET # 4	-	ACCOMMODATION PLAN
SHEET # 5	-	CONSTRUCTION PLAN
SHEET # 6	-	TECH PLAN
SHEET # 7	-	CONSTRUCTION DETAILS
SHEET # 8	-	CHARTER PLAN & BIRD SPART
SHEET # 9	-	MASTHEAD & SHROUD TRUSS
SHEET # 10	-	MISC. DETAILS

MAST MEASUREMENTS SCALE 3/8" = 1'
CUTTER TRIG.

UPPER SHROUD TRUSS - 1/2" S.S. PL. (2 WANTED)

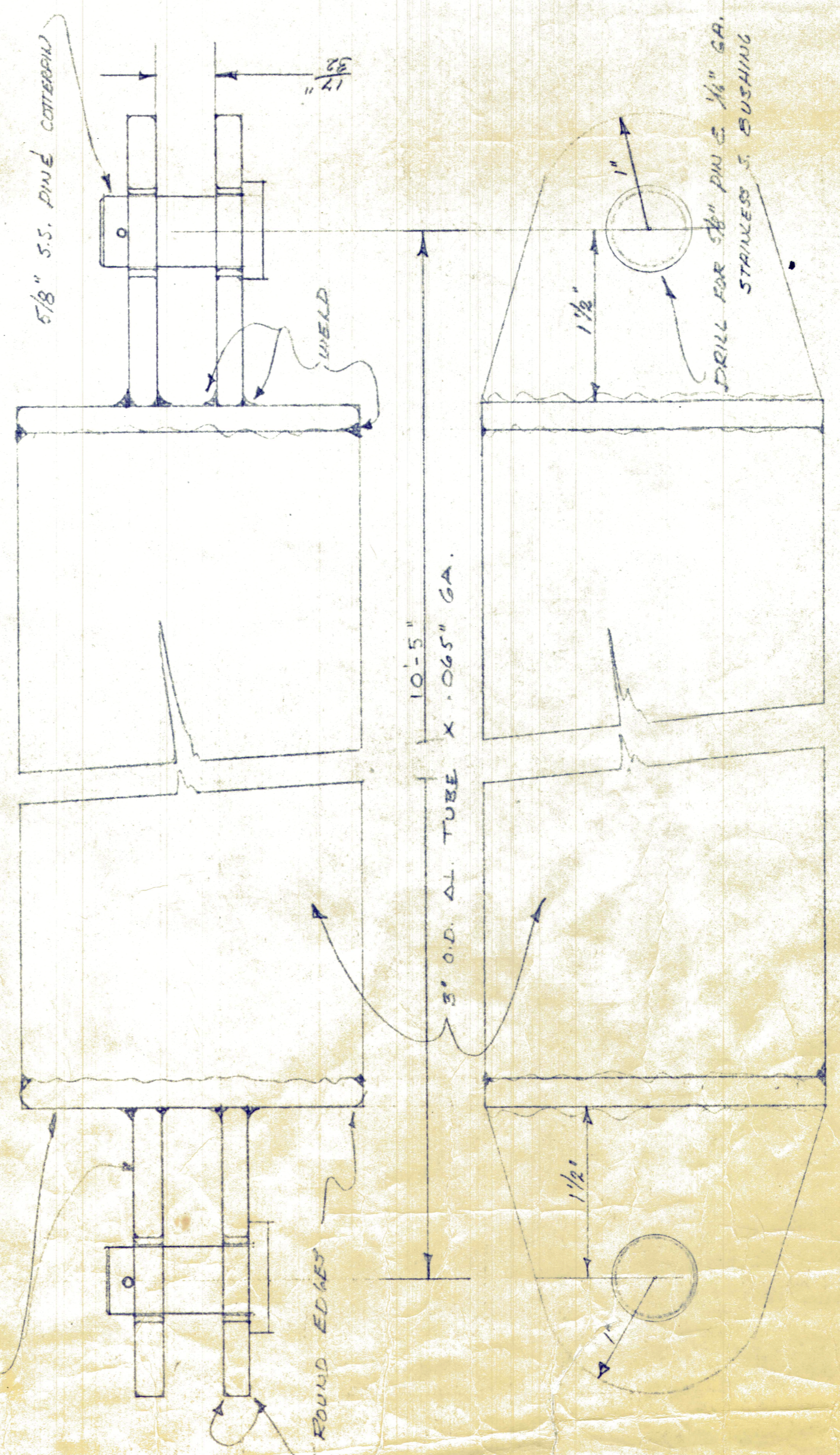


EDGEWATER YONK & STRUT TRUSS
1/2" S.S. PL. (ONE WANTED FOR KETCH TRIG.)

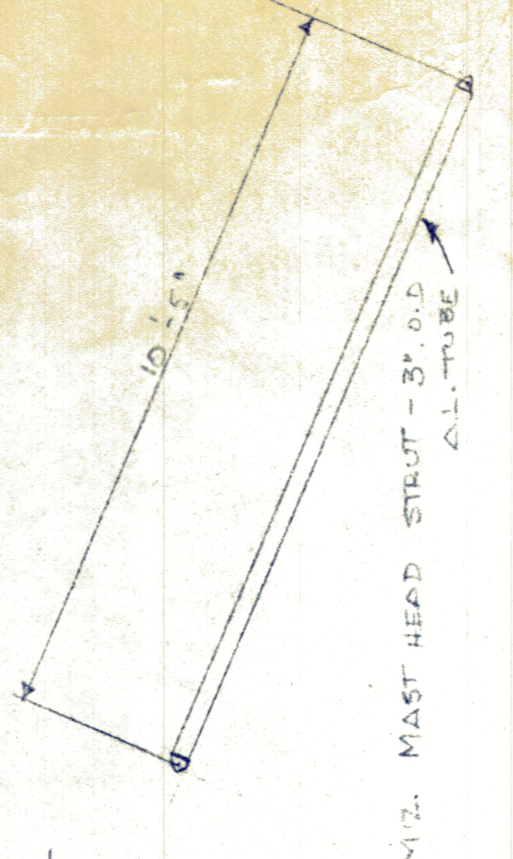


MIZZEN MASTHEAD STRUT

1/4" ALUMINUM ALLOY ELITE # 502 - H32



SPAR MEASUREMENTS FOR KETCH TRIG SCALE 3/8" = 1'



MIZ. MAST HEAD STRUT - 3/8" AL. TUBE

10.5"

3"

10.5"

3"

10.5"

3"

10.5"

3"

10.5"

3"

10.5"

3"

10.5"

3"

10.5"

3"

10.5"

3"

10.5"

3"

OUTRIGER OF CANTERED RIG TRUSS

1300 GALVANIZED (110 STAIN)

1300 GALVANIZED (110 STAIN)

1300 GALVANIZED (110 STAIN)

1300 GALVANIZED (110 STAIN)

1300 GALVANIZED (110 STAIN)

1300 GALVANIZED (110 STAIN)

1300 GALVANIZED (110 STAIN)

1300 GALVANIZED (110 STAIN)

1300 GALVANIZED (110 STAIN)

1300 GALVANIZED (110 STAIN)

1300 GALVANIZED (110 STAIN)

DESIGNER S.C. HUNTINGFORD